



## Find your accommodation with Excelia and Studapart

*Hundreds of exclusive offers,  
especially for you!*



# SUMMARY

**1**

## Your platform with exclusive offers

- .1 Studapart & Excelia
- .2 Join the better housing community

**2**

## How does it work?

- .1 Rent in a few clicks
- .2 Good practices for finding quickly
- .3 Focus on the rental file
- .4 Focus on ... the guarantor

**3**

## Housing offers

- .1 Offers from private owners
- .2 Offers in student residences

**4**

## Advice and tips for a successful rental

- .1 Settle into your home
- .2 Good tips to make your daily life easier
- .3 Easily leave your home
- .4 Annex : The best housing glossary

**Our rental experts will answer your questions all summer long, sign up now!**





**1**

***Your platform with  
exclusive offers***

# 1.1 Studapart & Excelia *partners for your accommodation*

**Find your apartment quickly and with confidence**

**Excelia** & Studapart are partners to facilitate your access to housing anywhere in France for a minimum period of one month! Access a **100% private platform with pre-booked accommodation** for you:



**Exclusive announcements  
and any budget**



**Simplified procedures  
and 100% online**



**Support until the end  
of the rental**

**[housing.excelia-group.com](https://housing.excelia-group.com)**

**Access exclusive offers!**

To do this, register and unblock your account by entering the code **HOUSINGEXCELIA** or your proof of admission.

A multilingual team is available **6 days a week from 9 a.m. to 8 p.m.** to answer all your questions via:

- the chat of your platform (dialogue bubble at the bottom right of the screen)
- by mail **booking@studapart.com**



# 1.2

## Join the better housing community!

Since 2014, Studapart has been working with its partners **to simplify your access to housing**. A team of 50 enthusiasts meet every day to make rentals a **positive experience, no matter how long**.

### Simplicity

From the rental file to the signing of the lease: all **your procedures simplified and entirely online**.

### Safety

The **profiles are checked** and **the quality of the ads evaluated**. In the event of the unforeseen, we take it upon us to relocate you.

### Support

**Our multilingual team** will support you before, during and after your reservation on the platform.



Advertisements  
throughout France

**+150 000**



Google

**4,4/5**



Support satisfaction

**90%**







**2**

*How does it work?*

## 2.1 Rent in a few clicks

To register and access accommodation, simply click on this link\* :

[housing.excelia-group.com](https://housing.excelia-group.com)

*\*You can connect with a personal e-mail address or the login details of your establishment.*

1

### Search

Detail your rental criteria, we will help you find the ideal accommodation.

2

### Apply

A favorite ? Complete your file and apply in one click.

3

### Book

Book online by paying your first month's rent and platform fees.



The first rent will be automatically paid to your landlord via the platform. For the following ones, bank transfers must be made directly between you. The security deposit is paid outside the platform.

### A question ?

Use the chat or write to us at [booking@studapart.com](mailto:booking@studapart.com)



## 2.2 Best practices to find quickly!

### Luck is provoked

#### Start your research as soon as possible

Not a minute to lose: get started as soon as you are admitted. The sooner you join Studapart, the more peacefully you prepare for your arrival.

#### Fill in your rental file

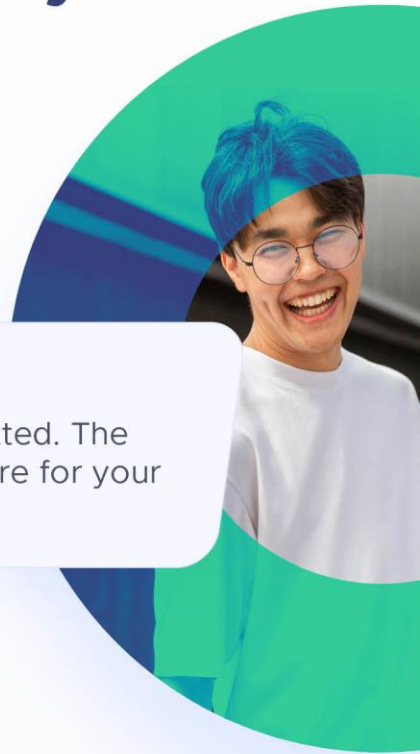
To help the lessor get to know you, complete your and **submit your documents once**, directly on the platform (identity document and letter of admission).

#### Contact several rental companies

The more reservation requests you make, the more likely you are to find - on average, **a Studapart tenant makes 7 requests before finding an apartment.**

#### Be responsive

There are many other students who are searching at the same time as you. Take the time to consult new offers, respond to rental companies and to Studapart messages. **Courtesy and responsiveness are your greatest allies.**



## 2.3 Focus on the rental file!

In France, all rental companies ask for a rental file. It allows them **to have information on their future tenant** and to check whether the profile matches their expectations, especially in terms of solvency (your ability to pay your rent).

### **And at Studapart, how does it work?**

We do our utmost **to simplify your procedures**. Directly online (on your profile) download your supporting documents and then apply unlimited!

#### **Only 2 mandatory documents:**



**your identity  
document**



**and proof of your  
admission / registration  
in your establishment.**

## 2.4 Focus on ... the guarantor

### Do you have a French guarantor?

Submit their identity document, their last 3 payslips and their tax notice in your Studapart rental file.

[Find out more here](#)



### Do you have no French guarantor or no guarantor at all?

In partnership with Allianz, Studapart can act as guarantor for you throughout the rental period. To do this, discover the "Guaranteed Profile" offer.

[Find out more here](#)

**Allianz** 



if you do not have the "Guaranteed Profile" offer, your landlord may ask you when booking online to take out the unpaid rent guarantee from Studapart.



The residence which I wanted to book asked me to have a French guarantor ... Without the Guarenteei Profile I would not have been able to rent this accommodation!

**Dwarkesh**  
Indian student







**3**

***Housing offers***

## 3.1 Offers from private owners

Studio, shared flat, room at the inhabitant's ... thousands of owners offer accommodation all over France. All of these listings are verified by our team! Go to the platform to access it

[housing.excelia-group.com](https://housing.excelia-group.com)



**For one person, the average rent budget in your city is :**

413 € in La Rochelle  
395 € in Tours

*This does not take into account CAF aid, do a simulation to find out your rights to housing aid (APL / ALS)> [HERE](#)*



## 3.2 Offers in student residences

From individual studios to shared apartments, student residences offer a wide choice of furnished accommodation. As a bonus, equipment and services such as: laundry, cafeteria, wifi, gym ...

For each of the student residences, benefit from **exclusive promotions and places reserved for French and international students of Excelia** ! Go to the platform to access it:

[Find out more here](#)



Click on the city of your campus to access to ads



[La Rochelle](#)



[Tours](#)



[Orléans](#)





## UXCO | ex Suitétudes H2O

+ 2 km to campus

Ref : 633

Close to  
your  
campus



Type	Rent	Surface	Service fees
individual accommodation	From <b>535 €</b> /months	<b>22 m<sup>2</sup></b> min	From <b>385 €</b>
Shared accommodation	From -	-	From -

*Find all of the offer on*

[housing.excelia-group.com](https://housing.excelia-group.com)



## RESIDENCE ATHOME

+ 0,9 km to campus

Ref : 2400

Close to  
your  
campus



Type	Rent	Surface	Service fees
individual accommodation	From <b>530 €</b> /months	<b>20 m<sup>2</sup></b> min	From <b>395 €</b>
Shared accommodation	From -	-	From -

*Find all of the offer on*

[housing.excelia-group.com](https://housing.excelia-group.com)



## Résidence New Rochelle

+ 1 km to campus

Ref : 958

Close to  
your  
campus



Type	Rent	Surface	Service fees
individual accommodation	From <b>554 €</b> /months	<b>16 m<sup>2</sup></b> min	From <b>365 €</b>
Shared accommodation	From -	-	From -

*Find all of the offer on*

[housing.excelia-group.com](https://housing.excelia-group.com)





## Appart'City La Rochelle

+ 3 km to campus

Ref : 2343

Close to  
your  
campus



Type	Rent	Surface	Service fees
individual accommodation	From <b>540 €</b> /months	<b>18 m<sup>2</sup></b> min	From <b>200 €</b>
Shared accommodation	From -	-	From -

*Find all of the offer on*

[housing.excelia-group.com](https://housing.excelia-group.com)



## Cap'Etudes La Rochelle

+ 1 km to campus

Ref : 1735

Close to  
your  
campus



Type	Rent	Surface	Service fees
individual accommodation	From <b>490 €</b> /months	<b>16 m<sup>2</sup></b> min	From <b>300 €</b>
Shared accommodation	From -	-	From -

*Find all of the offer on*

[housing.excelia-group.com](https://housing.excelia-group.com)



## UXCO | ex Suitétudes GAYA

+ 2,5 km to campus

Ref : 2341

Close to  
your  
campus



Type	Rent	Surface	Service fees
individual accommodation	From <b>415 €</b> / months	<b>19 m<sup>2</sup></b> min	From <b>280 €</b>
Shared accommodation	From <b>575 €</b> / months	<b>33 m<sup>2</sup></b> min	From <b>414 €</b>

*Find all of the offer on*

[housing.excelia-group.com](https://housing.excelia-group.com)



## Odalys Résidence Archipel

Ref : 1781



Type	Rent	Surface	Service fees
individual accommodation	From <b>580 €</b> /months	<b>24 m<sup>2</sup></b> min	From <b>300 €</b>
Shared accommodation	From <b>840 €</b> /months	<b>37 m<sup>2</sup></b> min	From <b>300 €</b>

*Find all of the offer on*

[housing.excelia-group.com](https://housing.excelia-group.com)



## Appart'City Tours

+ 3 km to campus

Ref : 1499

Close to  
your  
campus



Type	Rent	Surface	Service fees
individual accommodation	From <b>480 €</b> /months	<b>16 m<sup>2</sup></b> min	From <b>300 €</b>
Shared accommodation	From -	-	From -

*Find all of the offer on*

[housing.excelia-group.com](https://housing.excelia-group.com)



## Adagio Access Tours

+ 3 km to campus

Ref : 1779

Close to  
your  
campus



Type	Rent	Surface	Service fees
individual accommodation	From <b>500 €</b> /months	<b>18 m<sup>2</sup></b> min	From <b>150 €</b>
Shared accommodation	From -	-	From -

*Find all of the offer on*

[housing.excelia-group.com](https://housing.excelia-group.com)



+ 3 km to campus

Ref : 481

Close to  
your  
campus



Type	Rent	Surface	Service fees
individual accommodation	From <b>416 €</b> / months	<b>16 m<sup>2</sup></b> min	From <b>250 €</b>
Shared accommodation	From -	-	From -

*Find all of the offer on*

[housing.excelia-group.com](https://housing.excelia-group.com)



## Cardinal Campus - CAMPUS TOURS

+ 2 km to campus

Ref : 1535

Close to  
your  
campus



Type	Rent	Surface	Service fees
individual accommodation	From <b>390 €</b> /months	<b>19 m<sup>2</sup></b> min	From <b>190 €</b>
Shared accommodation	From -	-	From -

*Find all of the offer on*

[housing.excelia-group.com](https://housing.excelia-group.com)





## Odalys Le Jardin des Lettres

+ 5 km to campus

Ref : 1683

Close to  
your  
campus



Type	Rent	Surface	Service fees
individual accommodation	From <b>560 €</b> /months	<b>20 m<sup>2</sup></b> min	From <b>210 €</b>
Shared accommodation	From -	-	From -

*Find all of the offer on*

[housing.excelia-group.com](https://housing.excelia-group.com)



## Odalis Saint Jean

Ref : 1684



Type	Rent	Surface	Service fees
individual accommodation	From <b>514 €</b> / months	<b>19 m<sup>2</sup></b> min	From <b>200 €</b>
Shared accommodation	From -	-	From -

*Find all of the offer on*

[housing.excelia-group.com](https://housing.excelia-group.com)



## Appart'City Orléans

Ref : 2306



Type	Rent	Surface	Service fees
individual accommodation	From <b>510 €</b> / months	<b>18 m<sup>2</sup></b> min	From <b>150 €</b>
Shared accommodation	From -	-	From -

*Find all of the offer on*

[housing.excelia-group.com](https://housing.excelia-group.com)





## Adagio Access Orléans

Ref : 2318



Type	Rent	Surface	Service fees
individual accommodation	From <b>650 €</b> /months	<b>20 m<sup>2</sup></b> min	From <b>150 €</b>
Shared accommodation	From -	-	From -

*Find all of the offer on*

[housing.excelia-group.com](https://housing.excelia-group.com)



## Twenty Campus Orléans

Ref : 2417



Type	Rent	Surface	Service fees
individual accommodation	From <b>450 €</b> /months	<b>14 m<sup>2</sup></b> min	From <b>210 €</b>
Shared accommodation	From -	-	From -

*Find all of the offer on*

[housing.excelia-group.com](https://housing.excelia-group.com)



**4**

***Advice & tips for a successful rental!***



## 4.1 Settle into your home

All tenants in France are legally obliged to take out a home insurance policy. The policy must cover the entire rental period and be **presented to the landlord before moving in**.

### Insure your accommodation

#### With Studapart

Studapart offers a **simple, instant and transparent** home insurance. Find all the information on your Studapart logged account and subscribe in 2 clicks once you have booked your accommodation!

*Cherry on the cake:* Home insurance by Studapart also includes civil responsibility insurance, which is very often requested by schools and universities in France!



## Apply for housing benefits

On average, the rent account for up to 50% of tenant's budget. Good news: **no matter where you from**, you can benefit aids to help you lighten the cost of housing. Getting it rhymes with time-consuming and complex procedures. Luckily, we have the solution!

### Time is money! How about saving a taste of both?

With the Housing benefits Aid by Studapart, no more tearing your hair out trying to figure out the CAF's French administrative slangs. No need to wait for hours on line for answers to your question.

Since making your rental experience easier is our priority, we will guide you through the process to ensure you **get your housing benefits from the very 1st month effortlessly!** Receive your subsidies as soon as you move in and until the end of your rental period and benefit from up to 300€ of housing subsidies per month.



Up to 300€ aids  
per month



From the 1st day  
of your rental



In less than 48h



Sans efforts : un  
accompagnement  
à chaque étape

### Move in with peace

When you move in, you will visit the premises room by room with your landlord to see the **general condition of the accommodation and the equipment: this is the inventory**. This is a mandatory step which is accompanied by the signing of a document between the lessor and you. Organize and carry out your inventory according to the rules of the art, having in mind all the best practices and the elements to check.

### **With Studapart**

When leaving the accommodation, you will carry out **an exit inventory** in the same way. The entry inventory document will be used as a reference to ascertain any damage to the accommodation. Take care of your accommodation to make sure you get your full security deposit back and contact us with any questions!

### Take out an electricity contract

The need to take out an electricity contract on your behalf **depending on the type of accommodation**. Your landlord will inform you as soon as possible of the procedure to follow. Find the steps to take out a contract as well as the offers from different suppliers on [studapart.com](https://studapart.com) in the Tips section.

### **Studapart advice**

The electricity contract of the previous tenant may still be active when you move in. You will still have to take out a new contract at the risk of ending up with a power outage!

## 4.2 Good tips to make your daily life easier

### Manage your budget

In addition to your rent, there are regular expenses to include in your daily budget. You will have to think about **your monthly subscriptions** (internet, telephone, electricity, public transport...), **your meals and your leisure activities** (cinema, sport, exhibitions...).

### **Studapart advice**

Check out the student associations at your institution for the best deals!

### **Pay for your contribution to student and campus life (C.V.E.C.)**

This contribution, **amounting to € 92 for the 2020-2021 academic year**, is due each year by students prior to their registration for initial training, including distance learning, at a higher education establishment.

It makes it possible to better welcome students and to offer them social, health, cultural and sports support during their studies. **International university exchange students are exempt from this contribution.**

To pay your C.V.E.C, you must first register on the site [messervices.etudiant.gouv.fr](https://messervices.etudiant.gouv.fr) and then connect to the dedicated site [cvec.etudiant.gouv.fr](https://cvec.etudiant.gouv.fr)



## Open a bank account

How do I go about opening a bank account? Which banks to favor - traditional or online - and which options to choose? **Find the procedure to follow in our dedicated article** and above all compare the offers that are available to you!

You need a French bank account to receive housing assistance from the State (APL, ALS ...).

## **Studapart advice**

Compile all your needs and find out from several players before making a commitment. There are many good student plans at the start of the academic year, take advantage of them!

## **Access the health system**

Social security affiliation is **free and compulsory for all students in France**, whether French or foreign. Social security covers part of your health expenses.

### **Focus on the French health system**



#### **If you are a French student**

you are automatically registered.  
No steps to take on your part!



#### **If you are an international student**

you must register as soon as your registration at your institution is effective. Go to **[etudiant-etranger.ameli.fr](https://etudiant-etranger.ameli.fr)**

## European student?

You must register if you do not have a European Health Insurance Card (EHIC) or if you have an S1\* from.

**If you have an EHIC or were already enrolled in a French school this year, you do not need to register.**

**Warning !** *Your EHIC must be valid until the end of the current academic year for you to be reimbursed for your health costs. The CEAM concerns the member countries of the European Union, Iceland, Liechtenstein, Norway and Switzerland.*



## Non-European student?

You must register, **unless you were already enrolled in a French school this year.**

### \* Form S1

Portable document that is requested in your country, before leaving, from the health organization where you are affiliated. It allows you to register for social security in France. The S1 form is only for citizens of EU / EEA / Switzerland countries.

You can also subscribe to a **complementary health insurance ('mutuelle') to the social security.** This is not compulsory, but the mutuelle insurance company makes it possible to supplement the refund of your health expenses, which are **refunded at 60%** by social security.







## Useful numbers

**Firefighters: 18**

**Police: 17**

**Emergency Medical Assistance Service: 15**

**European emergency call number: 112**

112 can be dialed from a landline or mobile phone, without credit, with any European operator. You can also dial 112 from a phone without a SIM card.

**Psychological support: 0 800 235 236**

*Fil Santé Jeunes, free from a landline*

**From 9 a.m. to 11 p.m.** Anonymous and free.



## 4.3 Leaving your accommodation with ease and serenity

### Send your notice

You signed a rental contract when moving into your accommodation, so **you must notify the landlord of your departure** within the legal deadline: **1 month** if your accommodation is furnished, **3 months** if your accommodation is unfurnished\*.

*\* If your accommodation is unfurnished but is in a tense area, the notice is one month. Meet [here](#) to find out if your accommodation is in a tense area.*

### **With Studapart**

Tell Studapart and your landlord as soon as you know your date of departure from the accommodation, we will take charge of the re-rental of the accommodation! Upload your notice letter directly from [studapart.com](https://studapart.com).





### Carry out the leaving inventory

Once your notice has been sent, you must set a date with your rental company to carry out the leaving inventory. Clean the accommodation, replace the damaged items and remove all your belongings ... in short, make sure you return the accommodation in the same condition as you found it to recover your entire security deposit!

#### **Studapart advice**

Do not wait for the leaving inventory to notify the landlord of any damage to the accommodation, a relationship of trust is maintained throughout the reservation. Contact our support team for any questions, we remain your contact even after you have left the accommodation ([support@studapart.com](mailto:support@studapart.com)).



### Cancel your subscriptions

Internet, electricity, gas, home insurance ... you took out various subscriptions when you moved in, **it is up to you to terminate them before you leave your home.** You can anticipate the termination of your contracts for the day of your departure, think about it to minimize your costs!

#### **Studapart advice**

Start your termination procedures as soon as possible and learn about the contracts you have signed, an informed tenant is a happy tenant.

## 4.4 Appendices: The best housing glossary

### Renters

Your accommodation can be rented to you by **a private owner**, a **student residence**, a **real estate agency** or the Regional Center for University and School Works (**CROUS**). These lessors each have their own operations and conditions.

### **With Studapart**

Get to know and interact directly with rental companies via instant messaging.

### Accommodation

Studio, flatshare, apartment in a student residence, guestroom ... **You have the choice!** Find the characteristics of each of them and conduct your search according to your preferences.

### **With Studapart**

As soon as you register, tell us your search criteria to help us get to know you better.

## The rental file

The rental file is key in your search for accommodation. This is among other things **what allows the rental company to get to know you**. It mainly consists of your identity document and documents relating to your guarantor.

### **With Studapart**

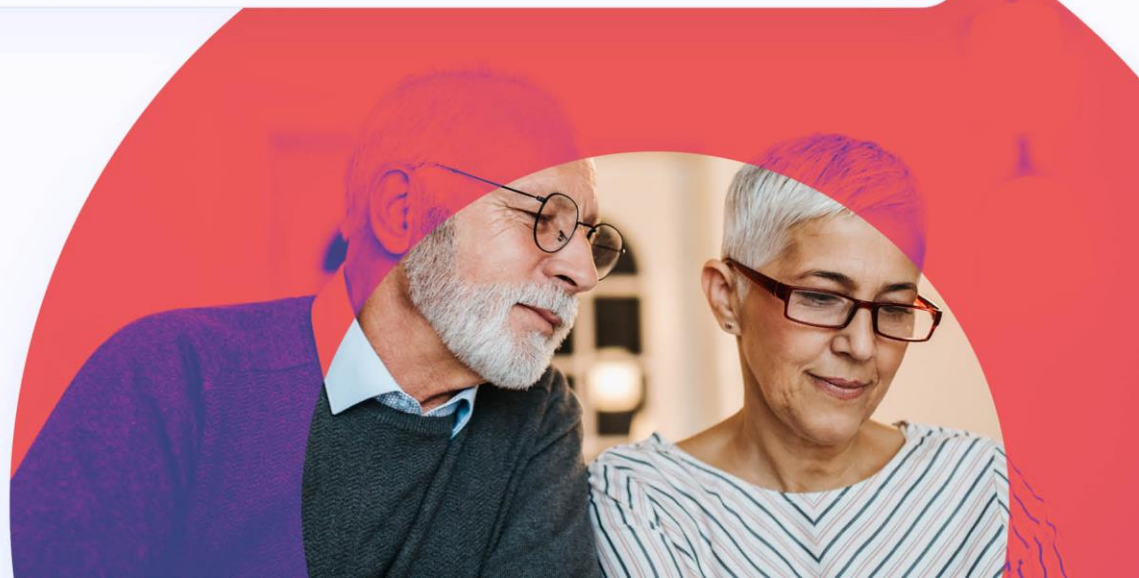
At Studapart, we ask you for as few documents as possible. You upload them to the platform all at once, and we give you tips to boost it. You can even have your file certified to maximize your chances!

## The guarantor

The guarantor is either **one of your relatives** or **an organization** which certifies that you are trusted and which provides a financial guarantee for your file. **The guarantor must be taxable on French soil.**

### **With Studapart**

If you do not have a guarantor, Studapart in partnership with Allianz can act as guarantor for you for the duration of the rental.





## The rental contract

It is the contract that formalizes the link between you and your lessor, and that lays **the foundations of trust for your rental**. It has **legal value** and should be able to refer to it at any time to ensure that everyone's rights are respected.

### **With Studapart**

Studapart supports rental companies in drawing up their contract. You can sign with your eyes closed! As soon as your reservation is validated, Studapart sends you a rental certificate which will allow you to start your administrative procedures (VISA, internet box, etc.)

## The security deposit

This is an amount that is taken from you when you sign the rental contract, and which allows the lessor **to ensure that the accommodation is respected**. The security deposit cannot exceed the equivalent of **1 month's rent for an empty accommodation, and 2 months of rent for a furnished accommodation**. It is returned to you in full at the time of the leaving inventory if no damage has been observed. The security deposit should not be used to pay the last month's rent.

### **With Studapart**

In conjunction with our partner rental companies, Studapart ensures the smooth progress of the return of the security deposit. Our support team remains in support of these subjects throughout the duration of your rental.





Our team is available from May to answer all your questions.

Don't waste any more time, register [HERE](#) to ask all your questions in live !





*Let's rent !*